

The spot you choose for your houseplant will determine its success; plants need

light to grow. Light intensity and duration are affected by such things as the angle of sunlight through a window, trees or curtains inside and out of the room, and reflective surfaces like mirrors or bright walls. Most houseplants are tropical and therefore prefer bright, indirect natural light. Cacti and some succulents are the exception to this; they thrive in hot, direct sun year-round.

The amount of light a space receives differs greatly season to season. A rainy winter day at noon may provide 20 times less brightness than in the heat of the summer. It may be necessary to move your plants to more light in winter, or shadier locales in the summer.

Too much light causes foliage to burn at the edges, or become colorless and wilt.

Too little light can make a plant leggy and cause leaf loss. If you are unable to move the plant to a more ideal location in your home, artificial light may be used to supplement (the lighting must be bright enough to stimulate photosynthesis).

Light Levels

LOW: far from any windows, barely enough natural light to read by.

MODERATE: areas around sunless windows or 5-8 feet from a sunny window; easy for most plants to adapt to this light.

BRIGHT INDIRECT: within 5 feet of a window that gets direct sun, but no direct rays on the foliage; preferable to most.

SOME DIRECT SUN: less than 5 hours of direct sun daily (such as an east or west-facing windowsill or a few feet away from a south-facing window; plants on western sides may need protection from heat in the summer); flowering plants and herbs do well here.

FULL SUN: at least 4-5 hours of direct sun each day. In summer, only cacti and succulents can handle this.



List of Common Plants

LOW:

Aglaonema-Chinese Evergreen, Silver Queen
Aspidistra-Cast-iron Plant
Sansevieria-Snake Plant
Zamioculcas Zamifolia-Eternity Plant

MODERATE:

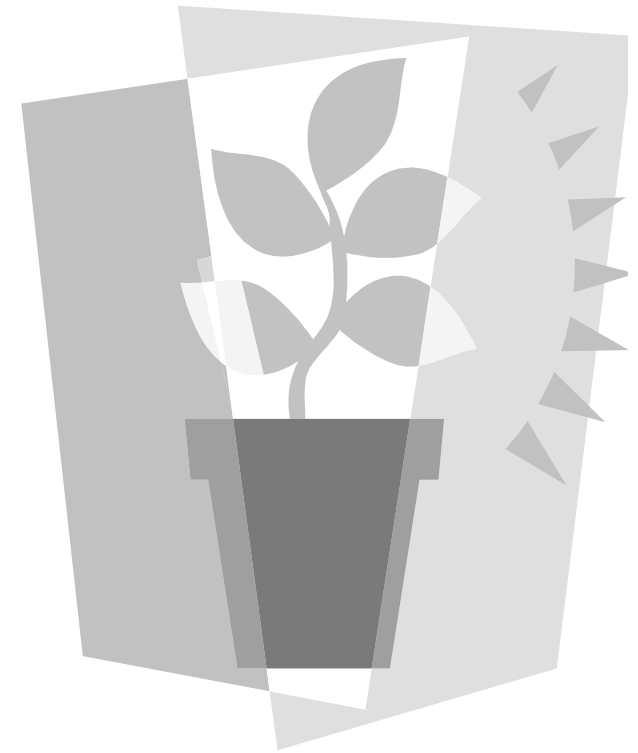
Acrostichum- Leather Fern
Adiantum- Maidenhair Fern
Asplenium/ Spleenworts-Mother Fern
Calathea- Peacock Plant
Chlorophytum- Spider Plant
Cissus- Grape Ivy, Kangaroo Vine
Dieffenbachia- Dumb Cane
Dracaena- Corn Plant
Epipremnum- Pothos, Taro Vine
Maranta- Prayer Plant
Nephrolepis- Boston Fern, Sword Fern
Nephtytis- Butterfly Plant
Palmae- Palms (please ask about specific ones)
Polypodium- Rabbit's Foot Fern
Sansevieria- Snake Plant
Spathiphyllum- Peace Lily
Strobilanthes- Persian Shield
Tradescantia- Wandering Jew, Inch Plant
Zebrina- Purple Wandering Jew

BRIGHT INDIRECT:

Adiantum- Maidenhair Fern
Alocasia-Elephant Ear
Anthurium- Flamingo Flower
Araucaria-Norfolk Island Pine
Bertolonia- Jewel Plant
Billbergia- Friendship Plant
Button Fern

Houseplants

LIGHT INTENSITY AND DURATION

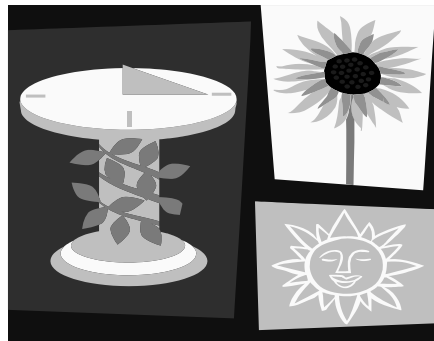


Calathea- Peacock Plants, Zebra Plant
Ceropegia- String of Hearts, Rosary Vine
Chlorophytum- Spider Plant
Clivia- Kaffir Lily
Colocasia- Taro, Elephant Ear
Cyathea- Tree Fern
Cyclamen
Dieffenbachia-Dumb Cane
Dizygotheca elegantissima- False Aralia
Fatsia Japonica- Japanese Aralia
Ficus- Figs, Rubber Plant
Fittonia- Net Leaf
Gardenia
Graptophyllum- Caricature Plant
Gynura- Purple Passion, Velvet Plant
Heliconia- Lobster Claws
Hoya- Wax Plant
Hypoestes- Polka Dot Plant, Freckle Face
Mimosa- Sensitive Plant
Monstera- Swiss Cheese Plant
Musa- Banana
Nepenthes- Pitcher Plant
Peperomia
Pilea- Creeping Charlie, Friendship Plant
Platynerium- Staghorn Fern
Rhipsalidopsis- Easter Cactus
Saintpaulia- African Violet
Schefflera- Amantie Stump
Schlumbergera- Christmas Cactus
Selaginella- Club Moss
Tillandsia

SOME DIRECT SUN:

Acalypha- Chenille Plant, Copperleaf
Alpinia/ Costus- Ginger
Begonia
Strelitzia- Bird of Paradise
Caladium
Caryota- Fishtail Palm

Clerodendron- Glorybower
Coffee Plant
Columnnea- Furry Goldfish Plant
Cryptanthus- Earth Stars
Cyanotis- Teddy Bear Vine
Darlingtonia/Sarracenia- Pitcher Plant
Datura- Angel's Trumpet
Dionaea- Venus Fly Trap
Gardenia
Iresine- Blood Leaf, Beefsteak
Nepenthes- Pitcher Plants
Oxalis
Stapelia- Carrion Flowers
Sedum- Donkey's Tail (Burro's Tail)



FULL SUN:

Abutilon
Agave
Allamanda- Golden Trumpet
Aloe
Citrus
Crassula- Jade Plant
Echeveria- Hen & Chicks
Euphorbia- Crown of Thorns, Poinsettia
Gerbera Daisy
Hibiscus
Jasmine
Kalanchoe
Pelargonium- Geranium